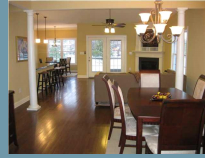
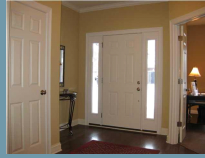


Active

6005 COTTAGE LN
CRESTWOOD, KY 40014

\$253,000
approx \$1,347/mo
(based on 20 % down)
*MOL



Welcome to the Cottages of Crestwood - A single family, maintenance free community in the heart of Crestwood! This beautifully appointed and custom constructed home features the following included interior finishes: 9 foot ceilings throughout; custom interior wood work including crown molding, base boards, built-ins & columns; hardwood flooring throughout except BRs and BTHs; ceramic tile baths & laundry room; raised panel cherry cabinetry in kitchen, maple cabinetry in baths and laundry room; granite countertops in kitchen & all bathrooms; Delta faucets; whirlpool tub & double vanity in Master BR; vaulted ceiling & gas fireplace in Great Room; high efficiency 90% gas furnace; 65 gal water heater; insulated walls and ceilings; stainless steel GE appliance package; security system. Exterior finishes include brick exterior; screened rear porch; low-e vinyl windows; steel insulated 2 car garage door with glass inserts, and an automatic opener with keyless entry; rear covered patio and covered front porch; dimensional shingles. \$125 per month community maintenance fee includes yard mowing & landscape maintenance, snow removal, exterior maintenance & street lighting. This 1 story floor plan is an open design with wonderful flow between the kitchen, breakfast area, great room and formal dining room. The oversized master suite exudes quality and amenities you would expect in higher price ranges. The second floor BR is a second master suite with a walk-in closet, sitting area and private bath. Plenty of storage. SINGLE STORY & 1 STORY floor plans available. 2 BR & 3 BR floor plans available. Prices range from \$209,000 to \$253,000, depending on floor plan and options selected. Furnished model home available for viewing Thursdays 2 to 6pm, Saturdays and Sundays from 1 to 5pm or ANYTIME BY APPOINTMENT. Conveniently located in Crestwood / Oldham County near prime shopping, amenities and fast access to expressways!

Highlights:

County: Oldham
Lot Size: 0
Acres: 0.1
Garage: 2
Total Rooms: 7
Bedrooms: 2
Full Baths: 3
Sq. Ft.: 2390 *MOL
MLS: 1293181

Additional Details:

Property Type: Residential
Monthly HOA Dues: 125
Style: Traditional
Exterior: Brick
Roof: Shingle
Level(s): 2
Living Areas: 1
Dining Areas: 2
Listing Area: Oldham Co S-I71
Distance to transit: Close
Distance to school: Close

Presented By:

Matt Weaver
(502) 376-0884
mattweaver@coldwellbanker.com



Matt Weaver Coldwell Banker/McMahan Co. - 6402 Railroad Avenue - PO Box 306 - Crestwood - KY - 40014 - mattweaver@coldwellbanker.com - Phone:
(502) 212-7425